



THE INTERSECTION OF SOMA AND MIDMA

Market Street



emerging tech market block to union square city life
 convenient to public transit quick freeway access Creative Space
 shopping new building upgrades restaurants neighborhood parking



For office leasing services please contact:

Roman Adler
 415.274.4434
 radler@ccareynkf.com

Donnette Clarens
 415.445.5120
 dclarens@ccareynkf.com

Mike Brown
 415.274.4423
 mbrown@ccareynkf.com





THE INTERSECTION OF SOMA AND MIDMA

Suites	Square Feet	Date Available
480	2,049	Now
500/600*	45,739	January 1, 2014

*connected by internal stairwell



NORDSTROM



Building Features:

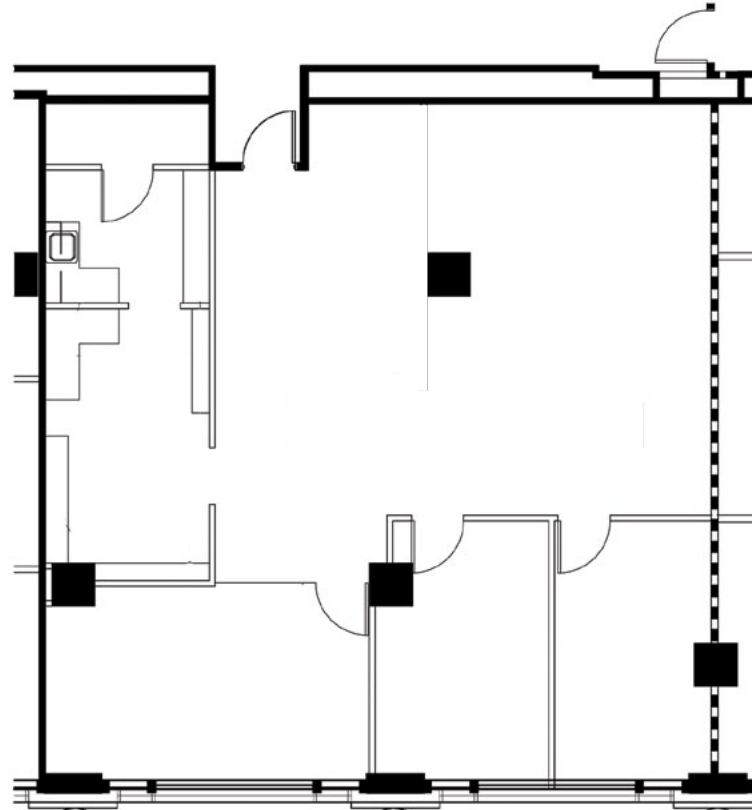
- Three sides of unique oversized windowline allowing for abundant natural light
- Building atrium and skylight offers dramatic illumination
- Operable windows and HVAC
- Creative, open plan fosters collaborative work environment
- Fantastic Market Street outlooks
- Unparalleled access to public transportation (10 steps to BART/MUNI)
- New, committed ownership
- Countless amenities, including world-renowned Union Square shopping and dining, within one block of the building





Fourth Floor (Suite 480):
Approx. 2,049 sf

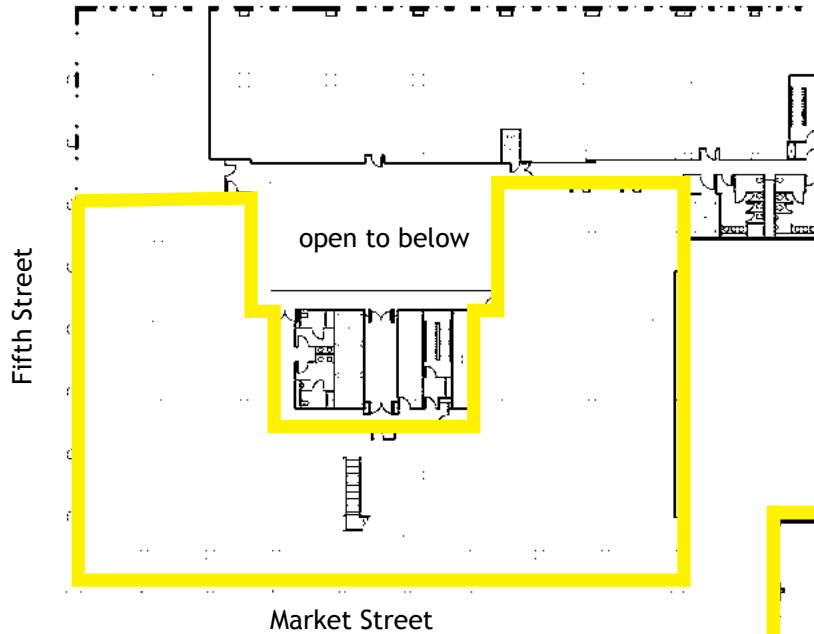
- Elevator identity
- Market Street windowline
- 3 offices/meeting rooms, kitchen/production room, open





**Fifth & Sixth Floor
(Suite 500/600):
45,739 sf**

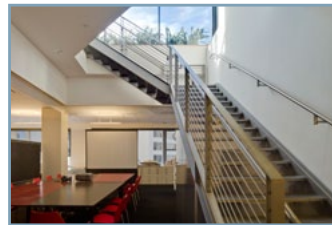
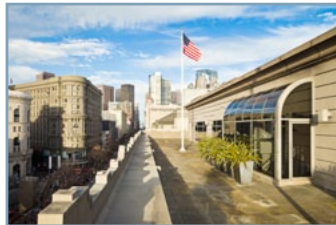
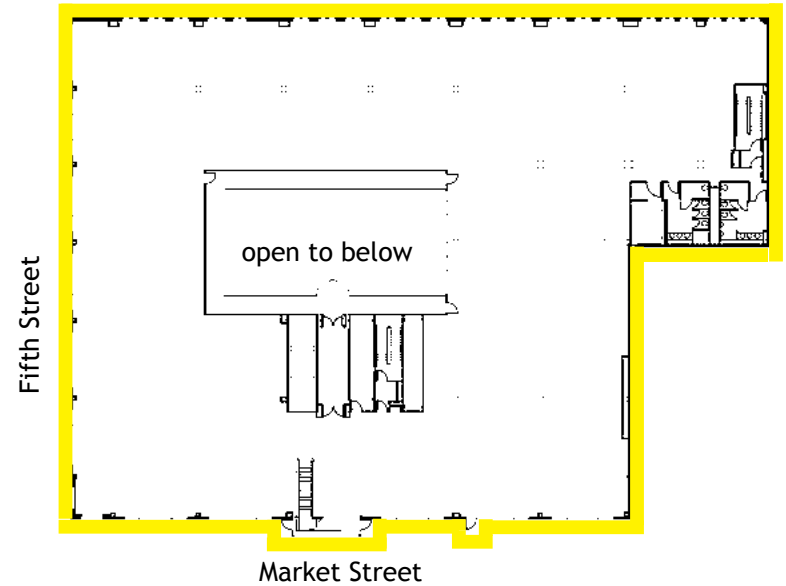
- Dramatic creative space
- Interconnecting stairwell
- Private deck
- Great natural light
- Primarily open plan
- 6th floor: 26,481 rsf
- 5th Floor: 19,258 rsf



5th floor



6th floor



901

Market Street

THE INTERSECTION OF SOMA AND MIDTOWN

Neighborhood Tenants & Amenities

- Cupola Pizzeria
- Andale
- Bistro Burger
- Buckhorn
- Café Bistro (Nordstroms)
- Chipotle
- Lark Creek Steak
- Loving Hut
- Out The Door
- SF Soup
- 'Wichcraft
- Yoppi
- Straits



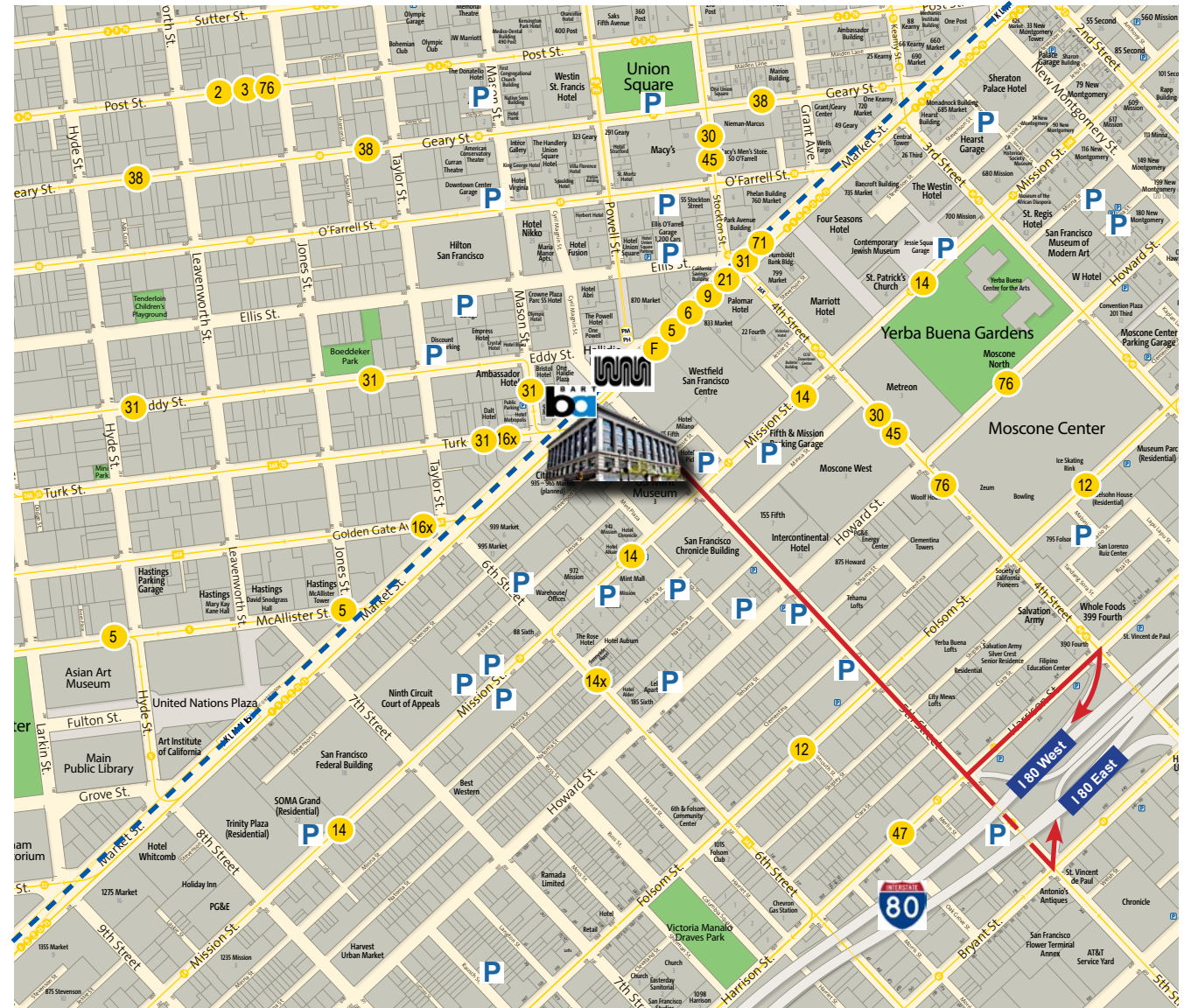
- Blue Bottle
- Chez Papa
- 54 Mint
- Thermidor
- Mezzanine
- US Mint Museum





Parking & Transit

- BART & Muni station 10 steps from front door
- Ample parking options
- Multiple Muni lines (bus & lightrail)
- Easy highway access



LEGEND

Muni lines	#
Parking	P
To Hwy	



  **Cornish & Carey Commercial
Newmark Knight Frank**

 **UDSON
PACIFIC
PROPERTIES**

EXCLUSIVE AGENTS: Roman Adler | 415.274.4434 | radler@ccareynkf.com | Lic # 01520766
Mike Brown | 415.274.4423 | mbrown@ccareynkf.com | Lic #01200178
Donnette Clarens | 415.445.5120 | dclarens@ccareynkf.com | Lic.#01234877